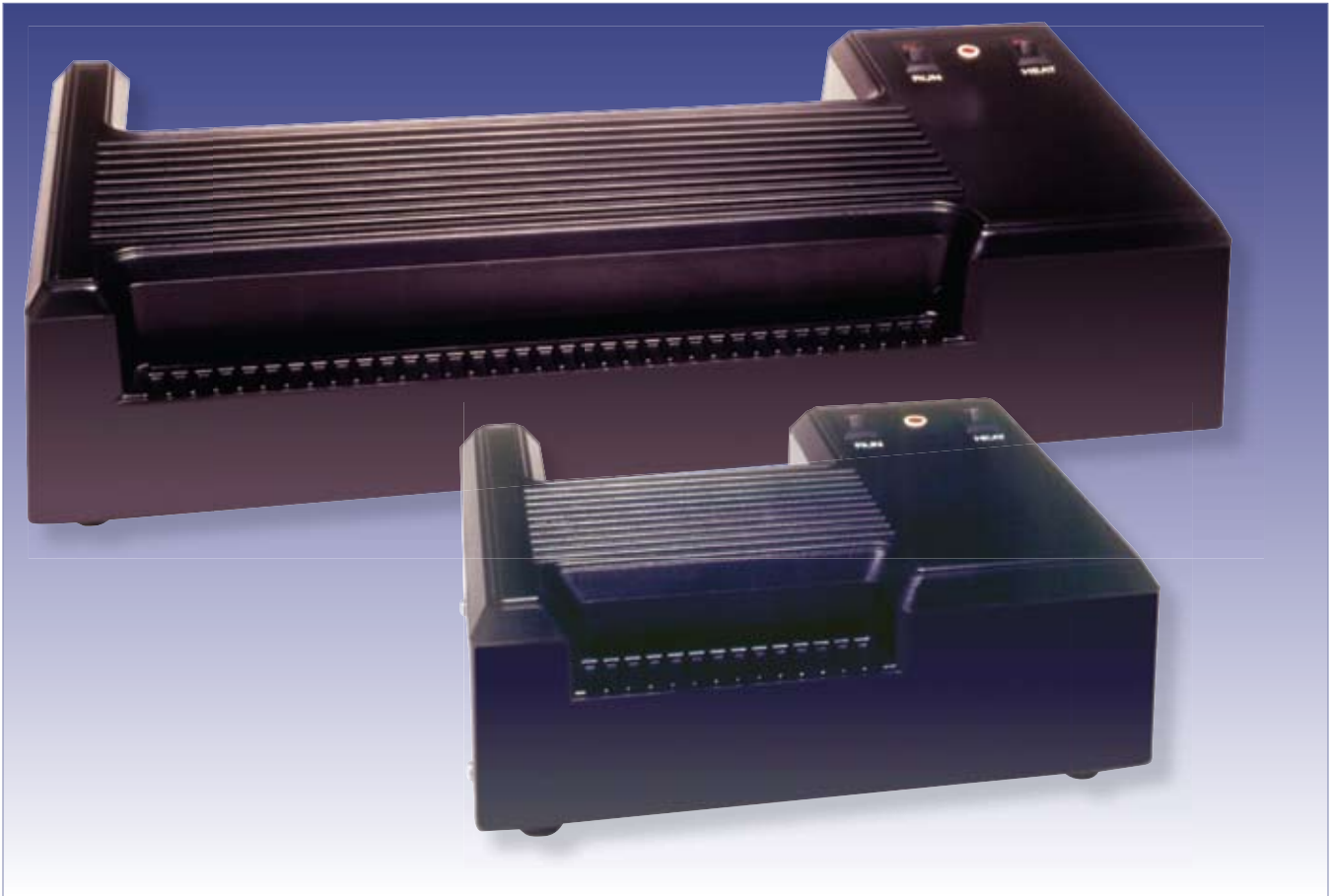

HEAVY DUTY POUCH LAMINATORS - PL4A & PL12A



These American made, heavy duty Pouch Laminators set the standard for the industry of identity protection. The PL4A and PL12A are a popular choice for the office and home market. Each can be used to preserve your photos, and documents. For those businesses that do in-house ID card printing the PL4A and PL12A laminators are perfect for protecting personnel identity cards and more.

The PL4A features 4 rollers, 2 separate switches (“On-Off” heat and “On-Off” motor), a “Ready” indicator light, a temperature adjustment control and a hard-wired power cord, and an optional outside thermometer.

The PL12A is a rugged heavy-duty laminator designed for continuous operation. It features 4 rollers, 2 separate switches (“On-Off” heat and “On-Off” motor) and a temperature adjustment control, a hard-wired power cord, and an optional outside thermometer.

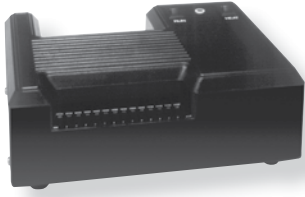
BANNER AMERICAN PRODUCTS, INC.

42381 Rio Nedo · Temecula, CA 92590-3701
(800) 572-2144 · (951) 296-9780 · Fax (951) 296-9790
E-Mail: marketing@banam.com · <http://www.banam.com>

S P E C I F I C A T I O N S

The PL4A and PL12A pouch laminators are ideal for laminating ID cards and badges, membership cards, luggage tags, etc. In addition to cards, the PL12A laminator will laminate larger documents up to 12" (30.48cm) width.

Pouch Laminator (Part No. PL4A)



Width Capacity	3-3/4" (9.53 cm)
Dimensions	8" (20.32 cm) L x 10" (25.40 cm) W x 3-3/4" (9.53 cm)H
Net Weight	7-3/4 lbs. (3.49 kilograms)
Shipping Weight	9 lbs. (4.05 kilograms)
Power Requirements	120 VAC, 50/60Hz, 275 watts

Pouch Laminator (Part No. PL12A)



Width Capacity	12-1/4" (31.12 cm)
Dimensions	8-1/2 (21.59 cm) L x 19" (48.26 cm)W x 4-1/8 (10.48 cm)H
Net Weight	15-1/2 lbs. (7.04 kilograms)
Shipping Weight	21-1/2 lbs. (9.76 kilograms)
Power Requirements	120 VAC, 50/60Hz, 820 watts

Pouch laminators are available with a built-in thermometer. Pouch laminators are also available in 220V models.